

DECISION 21/2011/GB  
OF THE GOVERNING BOARD OF THE EUROPEAN POLICE COLLEGE  
**ADOPTING THE**  
**CONTENT DESCRIPTION OF THE ONLINE LEARNING MODULE**  
**GENDER-BASED VIOLENCE**

Adopted by the Governing Board  
via written procedure  
on 24 June 2011

THE GOVERNING BOARD,

Having regard to the Council Decision 2005/681/JHA of 20 September 2005 establishing the European Police College (CEPOL) <sup>(1)</sup>, and in particular Article 10(9)(a) thereof;

Having regard to the proposal of the Training and Research Committee, submitted by the United Kingdom <sup>(2)</sup>;

Whereas:

- (1) The steps to be taken and matching responsibilities in the development of the online learning modules are based on the Governing Decision 27/2008/GB.
- (2) NCPs have been involved in the final validation of the content of the online learning modules.
- (3) The Working Group on Learning has been involved in the learning approaches.
- (4) It is for the Governing Board on the basis of Article 10(9)(a) of Council Decision 2005/681/JHA to adopt the content descriptions of the online learning modules.

HAS ADOPTED the Content Descriptions of the online learning Module on Gender-based Violence as detailed in the Annex to this Decision.

Done in Budapest, 24 June 2011

*For the Governing Board*

*József BODA*  
*Chair of the Governing Board*

---

<sup>(1)</sup> OJ L 256, 1.10.2005, p. 63.

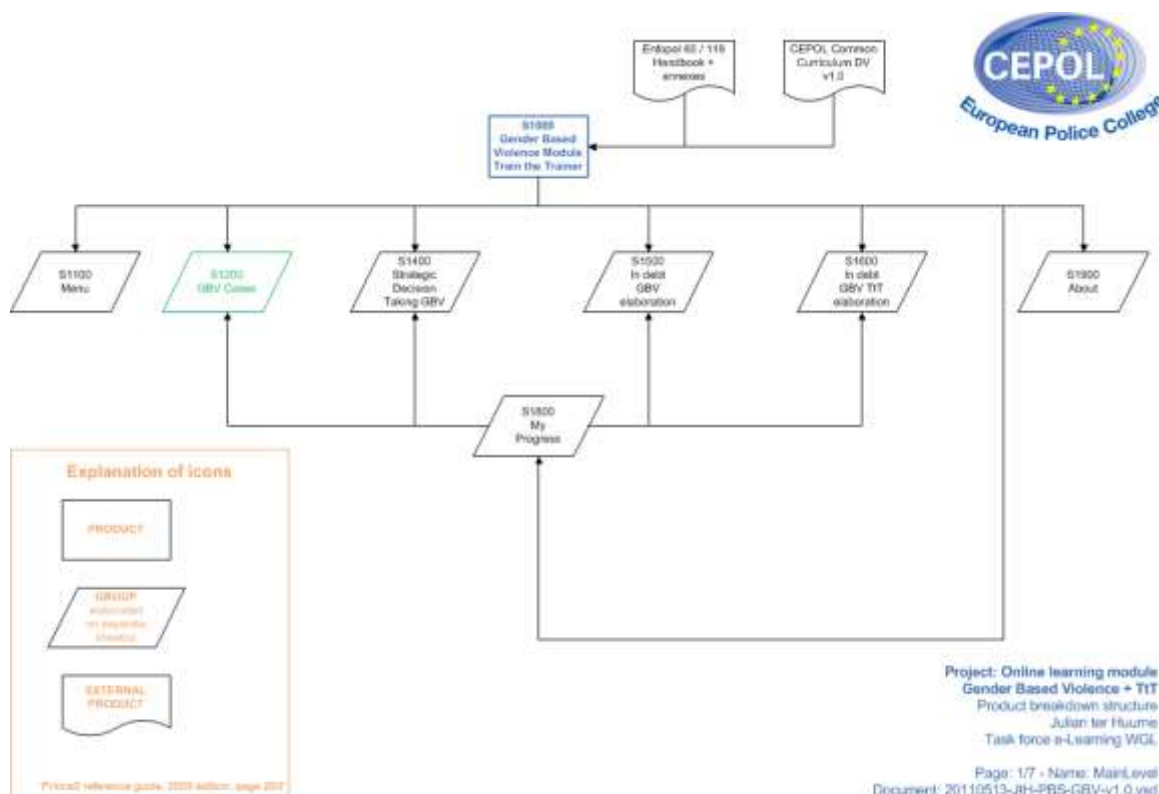
<sup>(2)</sup> 20th meeting of the Training and Research Committee; item 9.2.2 and Written Procedure from 17-24 May 2011

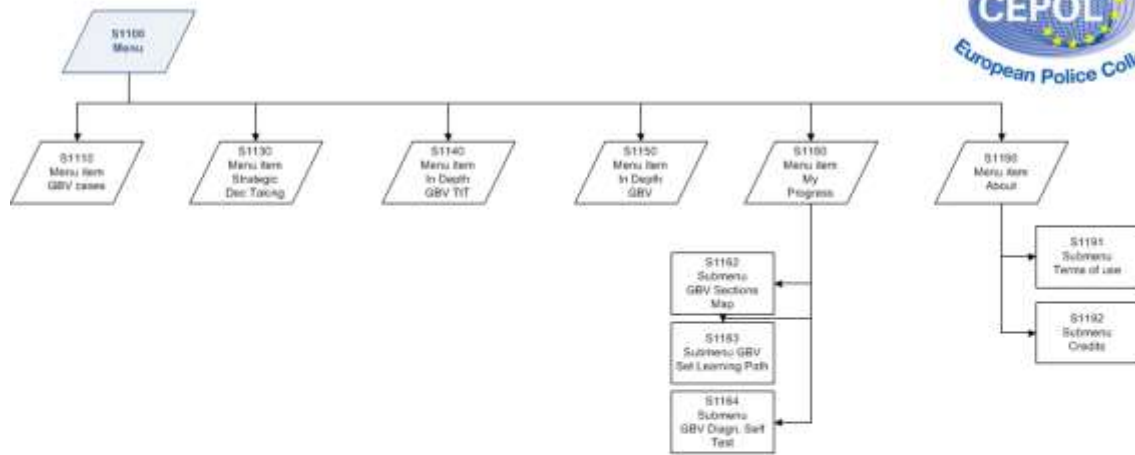
**Table of Contents**

- A. Product Breakdown Structure
- B. Cases
- C. Strategic Decision Taking
- D. Elaboration
- E. My Progress

**A. Product Breakdown Structure**

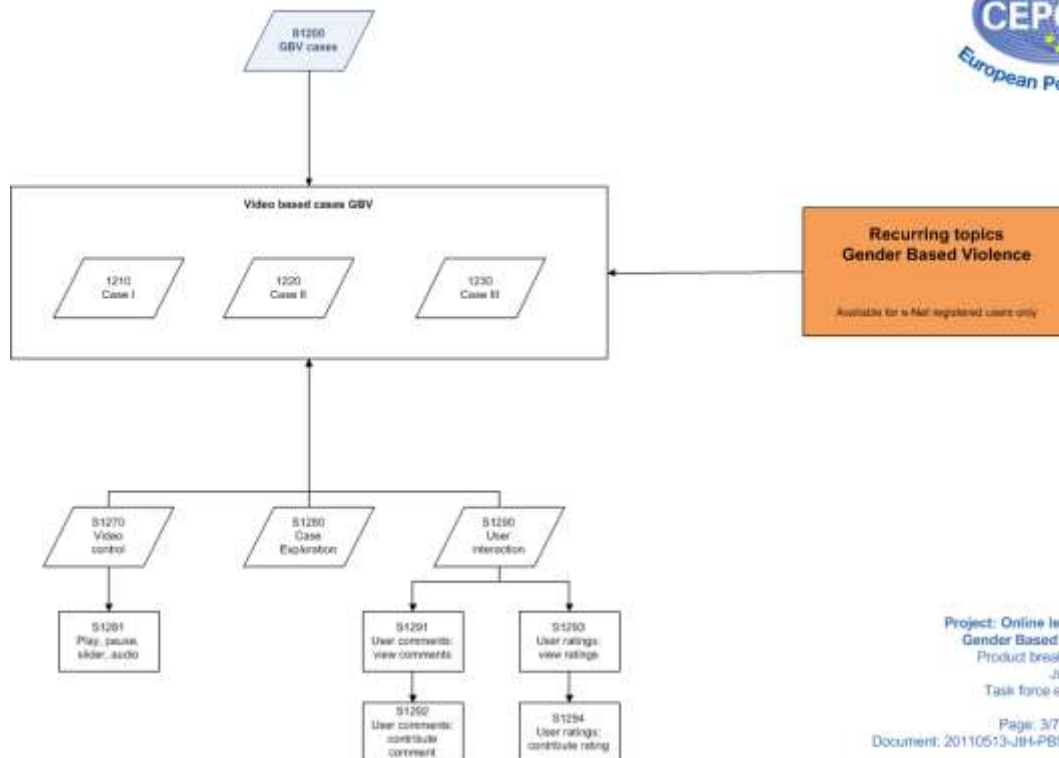
The Product Breakdown Structure (PBS) represents the content of the Gender-based Violence module as they are set up in the online learning module. Key charts of the PBS are displayed below covering the online learning module’s main level, case level, exploration level, diagnostic self-evaluation level and progress level. The full PBS is available to registered users of CEPOL’s website.





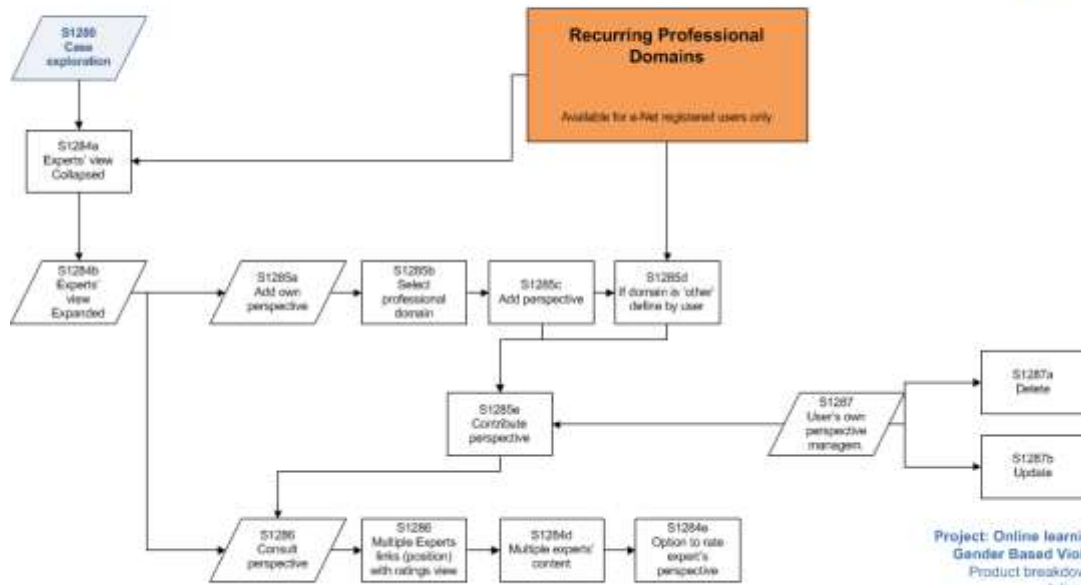
Project: Online learning module  
 Gender Based Violence + TIT  
 Product breakdown structure  
 Julian ter Huurne  
 Task force e-Learning WGL

Page: 2/7 - Name: Menu  
 Document: 20110513-JH-PBS-GBV-v1.0.vsd



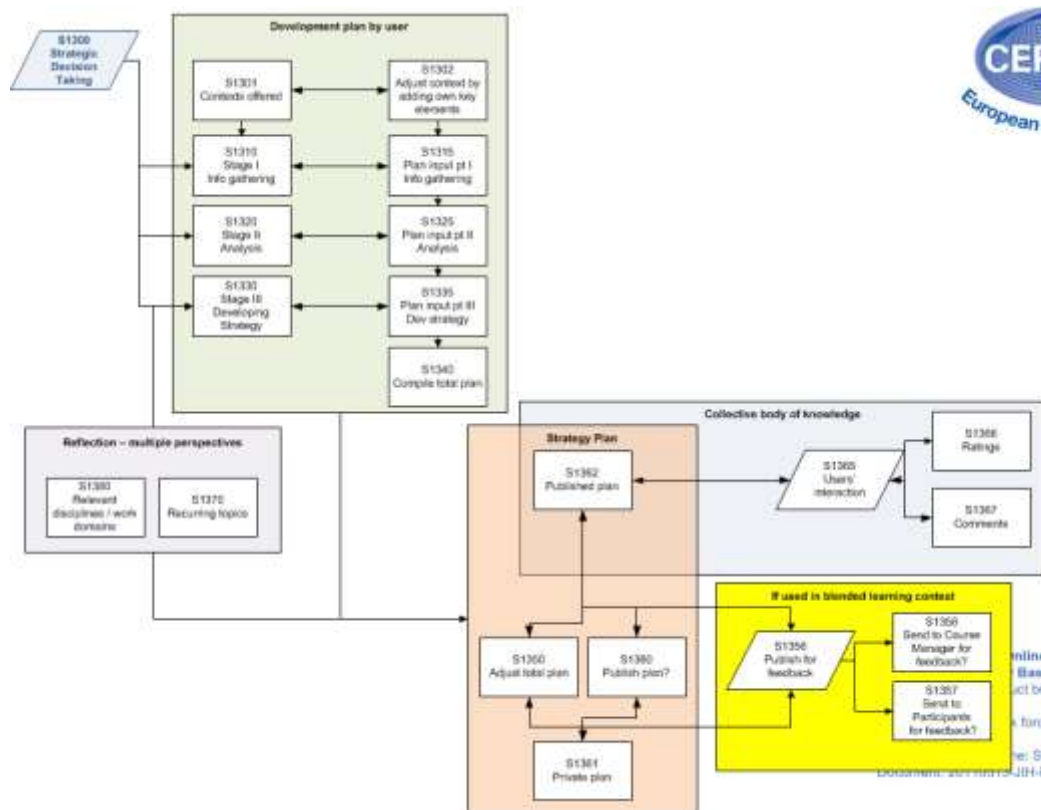
Project: Online learning module  
 Gender Based Violence + TIT  
 Product breakdown structure  
 Julian ter Huurne  
 Task force e-Learning WGL

Page: 3/7 - Name: Cases  
 Document: 20110513-JH-PBS-GBV-v1.0.vsd

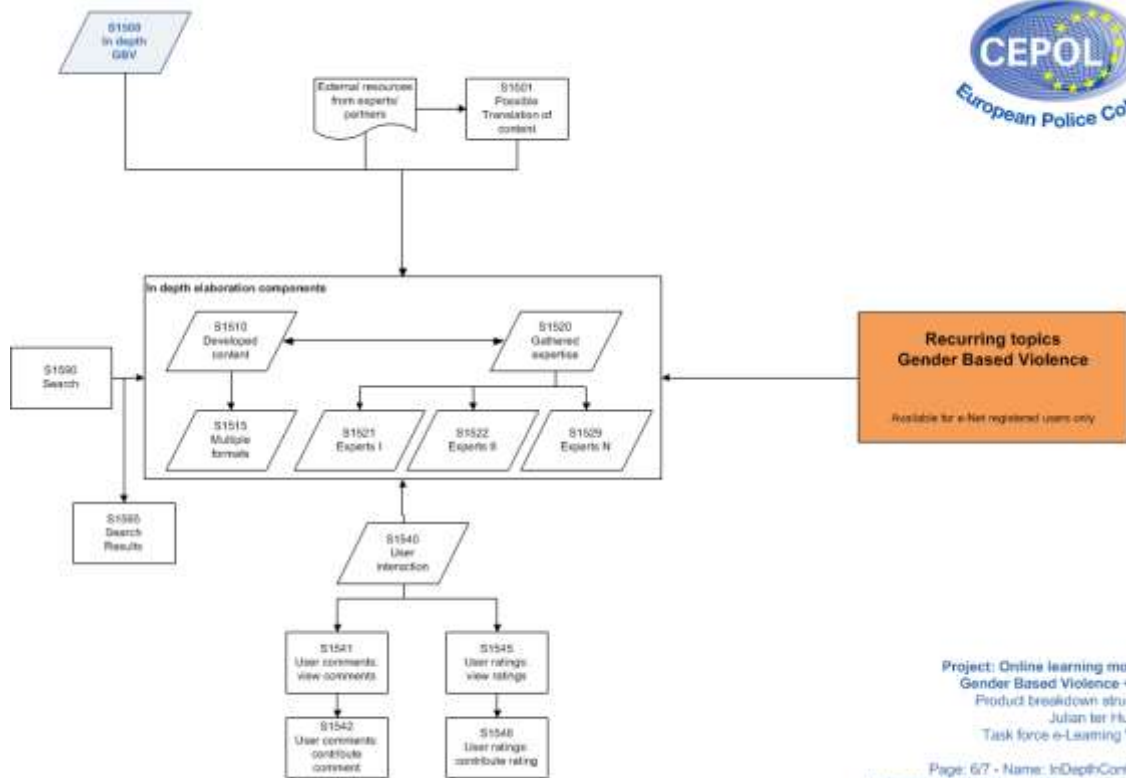


Project: Online learning module  
Gender Based Violence + TIT  
Product breakdown structure  
Julian ter Huurne  
Task force e-Learning WGL

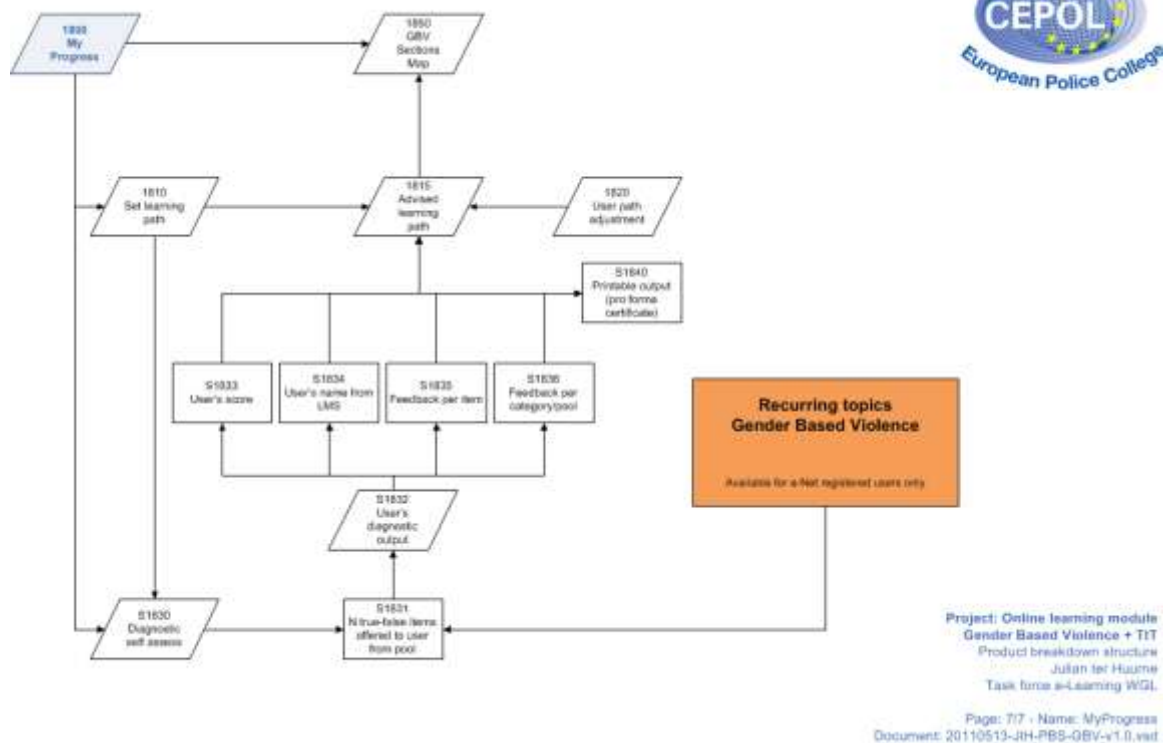
Page: 4/7 - Name: CaseExploration  
Document: 20110513-JIH-PBS-GBV-v1.0.vsd



Online learning module  
Gender Based Violence + TIT  
Product breakdown structure  
Julian ter Huurne  
Task force e-Learning WGL  
Name: StratDecTakingGBV  
Document: 20110513-JIH-PBS-GBV-v1.0.vsd



Project: Online learning module  
Gender Based Violence + T1T  
Product breakdown structure  
Julian ter Huurne  
Task force e-Learning WGL  
Page: 67 - Name: InDepthContElab  
Document: 20110513-JIH-PBS-GBV-v1.0.vsd



Project: Online learning module  
Gender Based Violence + T1T  
Product breakdown structure  
Julian ter Huurne  
Task force e-Learning WGL  
Page: 77 - Name: MyProgress  
Document: 20110513-JIH-PBS-GBV-v1.0.vsd

**B. Cases**

The cases are exemplary for Gender-based Violence policing domain. The issues of Gender-based Violence and good practices are pictured.

**C. Strategic Decision Taking**

Users of the Gender-based Violence module will be offered mini-cases in which they have to take strategic decisions. The users can reflect on their own decisions taken as well as compare them with those of other users.

**D. Elaboration**

Users get more in depth information and knowledge about the recurring elements in the Gender-based Violence online learning module. Each elaboration is described in detail and reflects the Gender-based Violence domain. All elaborations are available for e-Net registered users.

**E. Diagnostic Self Evaluation**

Users can test their own knowledge about Gender-based Violence at any time while using the online learning module. Test items are pooled according to the recurring elements.

The full content descriptions of the Gender-based Violence online module are available to registered users of CEPOL's website.